

CAGCY Discoverer's and Youth Newsletter

ISSUE ONE TERM ONE 2011

Dear Parents,

This newsletter is aimed out our Discoverer's Club and Youth members. It contains important information about upcoming events for Term 1 2011. We would love to hear your feedback.

The Discoverer's Team



Inside this

Other Youth Activities	2
Term One Workshops	2
What's Going On This Term	3
Wordfind	3
Earth Facts + Whats on Around Town	4
2011 Calendar of Events	5
CONTACTS	5



Welcome Everyone!

Hello to all our wonderful Discoverers and Youth,

We hope that the year has got off to a good start for you all. It certainly has for us at CAGCY. We have been very busy planning activities for us all to enjoy this term.

In January we were lucky enough to visit the White Flipped Penguins out at Taylor's mistake, it was a bit of a walk to get there but well worth it. The adult penguins were out fishing and wouldn't be back until sunset so we were able to get up close to the penguin chicks, they were really cute but a little stinky!



Later in January we had a special visitor to Richmond Cottage...a real live Tuatara. It was neat to see this wonderful creature and learn all about its habitat and predators, Jan from Willowbank was wonderful and even bought a real Kiwi skin for us all to touch.

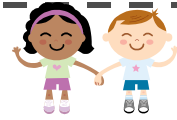
We have many more activities planned for this term as well as workshops returning on Wednesday and Friday afternoons. This newsletter has a list of activities and dates on the next page so you can keep track of what is happening this term.

Preserve Our Planet

There are many environmental issues that face the world today, global warming, rubbish, pollution, deforestation and many others. This is really sad and has many effects on the animals and plants that share the planet with us. The really good news is that we can help, and it can be really simple. This term CAGCY is exploring the theme of "Preserve OUR Planet". Together we can find out ways of helping to keep the Earth clean and green and what other organizations around New Zealand and the World may be doing to help too.



Other Youth Activities



Armageddon returns to Christchurch April 2nd & 3rd.

If you are interested in creating a Cosplay entry (skirts are optional!) registrations for the Christchurch competition should be in by midday 30th March 2011.

If you just want to dress up as your favourite character, but don't want to enter the competition, you can enter the Cosplay Parade. Check out <http://www.armageddonexpo.com/nz/special-events/> for more details.

Wednesday night ice skating continues this term, contact Kate for more details.

Term One Workshops

Please NOTE : CAGCY Workshops are open to current CAGCY members only. Please see the February newsletter for all terms and conditions (Essential Workshop Information).

To book into any workshops email discoverers@cagcy.org.nz

WEDNESDAY at SLC Wednesdays (March 2, 9, 16, 23, 30, April 6)

T1WDC: Drama: Creating Character and Managing Emotions

Consider features, expressions, characteristics and emotions to create characters and manage emotions!

Where: Sydenham Room, SLC *Time:* 3.35 - 4.30pm *Fee:* \$45

FRIDAY at URLC Fridays (March 4, 11, 18, 25, April 1, 8)

T1ART: Art: Green Art!

Green art - get crafty with recyclables, create useful and imaginative artistic items - including paper!

Where: LR2 *Time:* 4.10 - 5pm *Fee:* \$45

T1SCI: Science: Green Science!

Green Science at work - experiment with the natural, renewable, and discover more about "Green Science" at work!

Where: LR2 *Time:* 4.10 - 5pm *Fee:* \$45

T1DRI: Drama: Improv

Play, Jest, & Create Comedy using Improv & other Comedy tools

Who: Ages 6+ *Where:* LR2 *When:* 5.10 - 6pm *Fee:* \$45

T1YDP: Youth Drama: Performance Workshops

Develop Drama Skills, Play with Scripts & Perform!

Who: Ages 10+ *Where:* LR2 *When:* 6.10 - 7.40pm *Fee:* \$55



"Take only what you need and leave the land as you found it"

- Arapaho Proverb



February



- 5th Youth Philosophy at McDonalds Merivale 7-9pm Contact Kate for more information.
- 19th Youth Philosophy at McDonalds Merivale 7-9pm.
- 20th Discoverer's-Orienteering at Bottle Lake Forest, free sausage sizzle!! See the February Newsletter for more details.



March



- 2nd Wednesday Drama workshop begins at South Learning Centre
- 4th Friday workshops begin at Upper Riccarton Library.
- 5th Youth Philosophy at McDonalds Merivale 7-9pm.
- 6th Discoverer's - Maize Maze, Adults \$12 Children \$8, Under 3's free.
- 19th Youth Philosophy at McDonalds Merivale 7-9pm.
- 20th Discoverer's - FOSSIL HUNT!
Carolyn Boulton, Doctorate Geology Student from University of Canterbury will be taking the Fossil Hunt.

G	E	T	A	T	E	R	E	R	O	T	W
R	T	N	E	C	A	I	E	P	S	D	A
E	N	E	R	G	Y	D	O	U	E	I	T
E	I	M	L	E	U	L	U	R	S	U	E
N	R	N	T	C	L	L	E	A	A	E	R
O	P	O	E	U	Y	G	V	T	T	C	E
O	T	R	T	E	N	C	A	T	C	E	N
N	O	I	T	A	V	R	E	S	N	O	C
I	O	V	D	R	A	E	E	R	I	N	E
N	F	N	E	T	N	E	R	U	T	A	N
G	E	E	W	H	R	T	R	A	X	R	T
K	I	W	I	T	R	S	N	A	E	C	O

Environment	Conservation	Trees
Oceans	Nature	Kiwi
Tuatara	Endangered	Energy
Earth	Pollution	Extinct
Green	Footprint	Reduce
Reuse	Recycle	Water

April

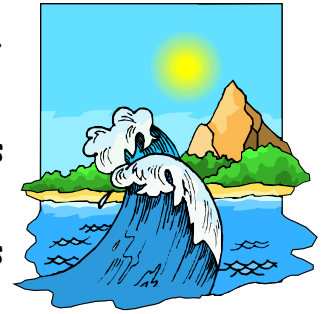


- 2nd Discoverer's - Visit the CHCH Hobbyist Beekeepers' Club 1.30-4pm.
- 2nd Youth Philosophy at McDonalds Merivale 7-9pm.
- 6th Last Wednesday workshop for the term.
- 8th Last Friday workshops for the term.



Some Interesting Earth Facts

- The Oceans occupy nearly 71% of our planet's surface.
- The Earth is approximately 4.5 billion years old!
- There are more than 1000 endangered animal species worldwide, including many New Zealand natives.
- 80% of all pollution found in the seas and oceans actually comes from things happening on land.
- Plastic waste kills up to a million sea birds, 100000 sea mammals (such as whales and dolphins) and too many fish to count each year.
- Trees keep our air fresh by soaking up the carbon dioxide and producing oxygen, each tree can provide enough oxygen for 2 people for the rest of their lives!
- The Earth is always moving, we just can't feel it because it is always moving at the same speed.



What's on Around Town?



February

Children's Storytelling CHCH Botanical Gardens Playground, event for children of all ages with stories inspired by the 'Magic of Water'. Saturdays and Sundays 11am-12.30pm until the 5th/6th March. FREE.

12th/13th Lunar New Year Celebrations at Upper Riccarton Library. 12.30pm Storytimes, 2-3pm Cultural groups perform (Korean and Chinese). FREE.

20th Farewell to the Godwits (Kuaka), Southshore Spit (at the end of Rockinghorse Road. 6.30pm, BYO binoculars, FREE Sausage Sizzle! No dogs allowed. FREE.

26th/27th Chinese Lantern Festival, Victoria Square. 5.30pm-10.30pm. FREE

March

12th Culture Galore, Ray Blank Park, Maidstone Rd. 12-4pm. "More than 50 different cultural performances and demonstrations, a huge variety of ethnic foods, art and crafts for sale and loads of fun activities for the whole family."

13th Canterbury Rare Breeds Annual Auction at Willowbank. 10.30-1pm. \$10 each adult which includes entry to Willowbank for the time period, children are FREE.

Meet up with other CAGCY families around town, email discoverers@cagcy.org.nz if we might see you at any of these events.

2011 CAGCY Calendar of Events

Discoverers Club Activities Like Minds Playgroup Youth Events
 Adult Education or TESS CAGCY 2011 AGM Social Sparks

www.cagcy.org.nz

CAGCY
 PO Box 31-114

President:
 Kate Coleman
president@cagcy.org.nz

Secretary:
 Helen Campbell
secretary@cagcy.org.nz

Treasurer:
 Monique Davidson
treasurer@cagcy.org.nz

Other Contacts:
 Tara Burns
preschool@cagcy.org.nz

Bronwyn Lavery
grants@cagcy.org.nz

Melissa Davidson
newsletter@cagcy.org.nz



January						
S	M	T	W	T	F	S
						1
2	3	4	5	6	7	8
9	10	11	12	13	14	15
16	17	18	19	20	21	22
23	24	25	26	27	28	29
30	31					

February						
S	M	T	W	T	F	S
		1	2	3	4	5
6	7	8	9	10	11	12
13	14	15	16	17	18	19
20	21	22	23	24	25	26
27	28					

March						
S	M	T	W	T	F	S
		1	2	3	4	5
6	7	8	9	10	11	12
13	14	15	16	17	18	19
20	21	22	23	24	25	26
27	28	29	30	31		

April						
S	M	T	W	T	F	S
					1	2
3	4	5	6	7	8	9
10	11	12	13	14	15	16
17	18	19	20	21	22	23
24	25	26	27	28	29	30

May						
S	M	T	W	T	F	S
1	2	3	4	5	6	7
8	9	10	11	12	13	14
15	16	17	18	19	20	21
22	23	24	25	26	27	28
29	30	31				

June						
S	M	T	W	T	F	S
			1	2	3	4
5	6	7	8	9	10	11
12	13	14	15	16	17	18
19	20	21	22	23	24	25
26	27	28	29	30		

July						
S	M	T	W	T	F	S
					1	2
3	4	5	6	7	8	9
10	11	12	13	14	15	16
17	18	19	20	21	22	23
24	25	26	27	28	29	30
31						

August						
S	M	T	W	T	F	S
	1	2	3	4	5	6
7	8	9	10	11	12	13
14	15	16	17	18	19	20
21	22	23	24	25	26	27
28	29	30	31			

September						
S	M	T	W	T	F	S
				1	2	3
4	5	6	7	8	9	10
11	12	13	14	15	16	17
18	19	20	21	22	23	24
25	26	27	28	29	30	

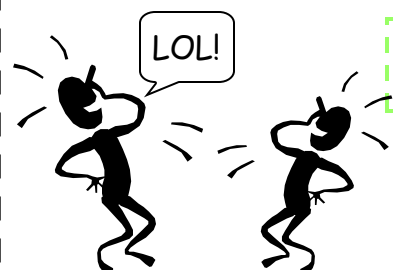
October						
S	M	T	W	T	F	S
						1
2	3	4	5	6	7	8
9	10	11	12	13	14	15
16	17	18	19	20	21	22
23	24	25	26	27	28	29
30	31					

November						
S	M	T	W	T	F	S
		1	2	3	4	5
6	7	8	9	10	11	12
13	14	15	16	17	18	19
20	21	22	23	24	25	26
27	28	29	30			

December						
S	M	T	W	T	F	S
				1	2	3
4	5	6	7	8	9	10
11	12	13	14	15	16	17
18	19	20	21	22	23	24
25	26	27	28	29	30	31

Jokes and Riddles

What does a Bee do if it wants to use public transport?
Wait at a buzz stop.



Where can you find an ocean without water?
On a map!

What is a Tornado?
Mother Nature doing the Twist.